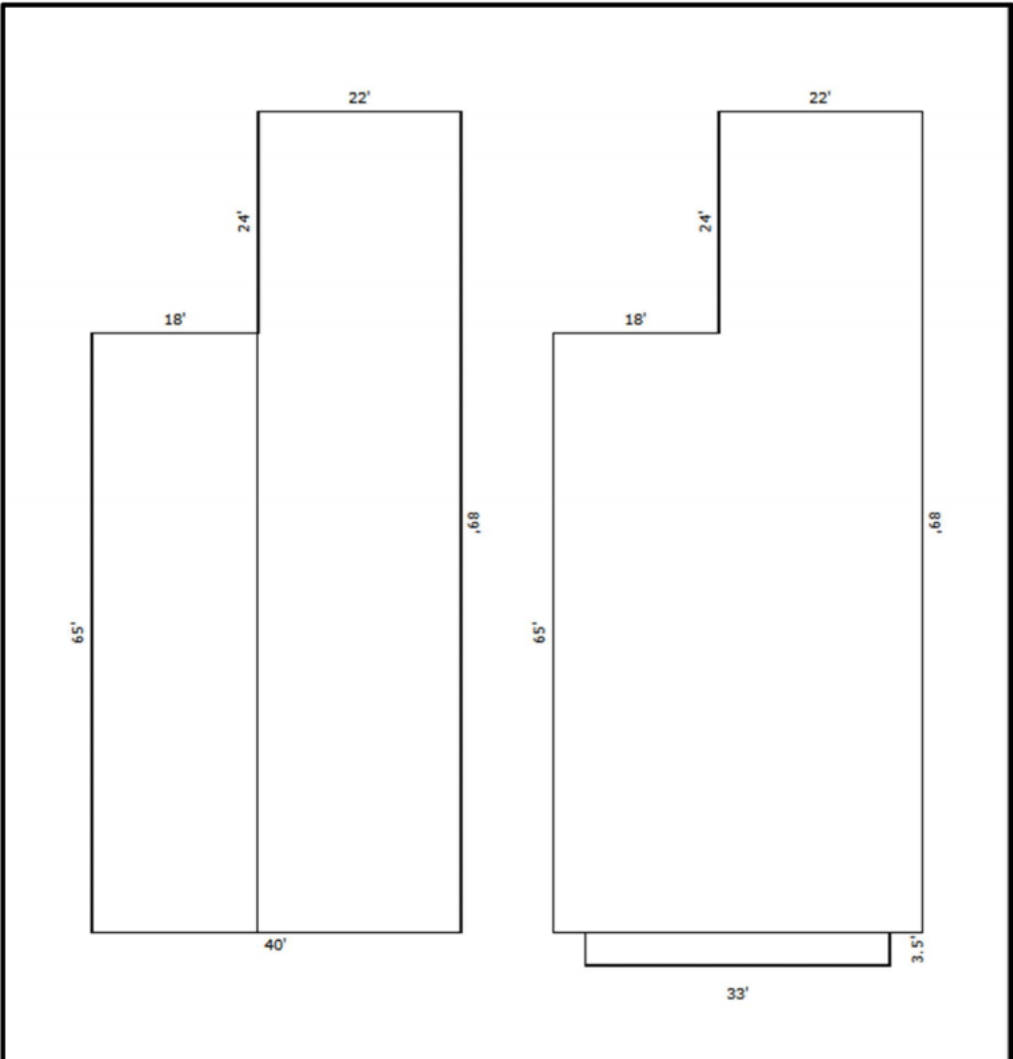


Building Sketch



TOTAL Sketch by a la mode		Area Calculations Summary	
Living Area		Calculation Details	
First Floor	3128 Sq ft	22 x 24 =	528
		65 x 40 =	2600
Second Floor	3128 Sq ft	22 x 24 =	528
		65 x 40 =	2600
Total Living Area (Rounded):		6256 Sq ft	
Non-living Area			
Balcony	115.5 Sq ft	33 x 3.5 =	115.5